

LAB LEDGER

CLUB OFFICERS

PRESIDENT

[Barry Staples](#)

VICE PRESIDENT

[Neil Martin](#)

CORRESPONDING SECRETARY

[Jim Griffin](#)

RECORDING SECRETARY

[Laura van Dalen](#)

TREASURER

[Jodi Martin](#)

DIRECTORS

[Carol Quaif](#)

[Lisa Bailey](#)

[Julia Kuni](#)

[Linda Rehkopf](#)

MEMBERSHIP

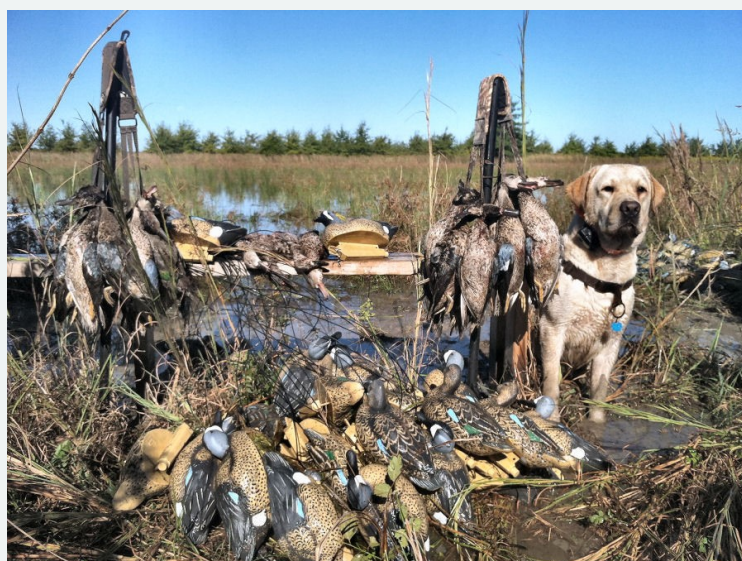
[Jim Griffin](#)

NEWSLETTER EDITOR

[Laura van Dalen](#)

WEBMASTER

[Jean McLain](#)



PRESIDENTS LETTER	2
MEETINGS	3
MEMBERSHIP	4
ANNOUNCEMENTS	5
JANUARY MEETING MINUTES	6
HEREDITARY NASAL PARAKERATOSIS	8
BRAGS	9
LITTER ANNOUNCEMENTS	11
DISCLAIMER	12



PRESIDENT'S LETTER

It's an exciting new year!

At our January meeting we accomplished a lot. We elected your new Board of Directors and officers for the coming year. We discussed changes to the club's annual year to make the timing of their election coincide better with the annual specialty show. Several Directors have asked and we are seeking your input as to the extension of terms for officers and directors from one to two years to make the operation of the club more efficient. We welcomed up new members. We are looking for a place to begin training for a working certificate. We have received an offer to begin training for CGC and other programs for people who may be interested.

Our conformation show season has begun and our members are already doing extremely well. Our most recent specialty show was the most successful ever and we are in better financial shape than we have been for a long while. We are looking forward to this year's show the weekend before Thanksgiving.

All in all, it's a promising beginning to what we hope will be another great year for the GALRC. On behalf of the newly elected Board members and Officers I would like to thank you for your support. We all look forward to helping make this year truly rewarding for all of our members. As always, we invite your comments and/or suggestions on how we can make the club better.

Our specialty for 2016 is in the initial planning stages. If you would like to help us in that contact any board member. We welcome your fresh ideas and participation.

If you have anything newsworthy please contact Laura Van Dalen and share it with us. She does a great job on our newsletter and is happy to receive items of interest.

We are all looking for an enjoyable and rewarding 2016.

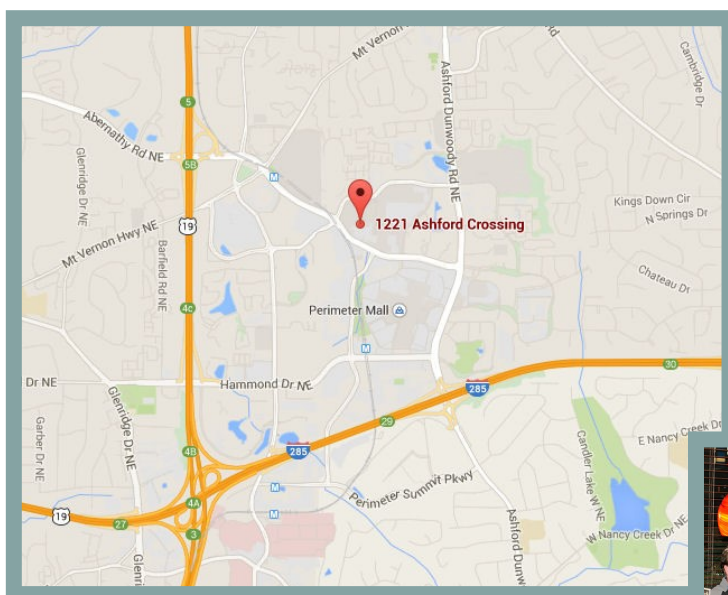


MONTHLY CLUB MEETING

OUR NEXT 2 MEETINGS WILL BE HELD ON **TUESDAY** FEBRUARY 23RD AND MARCH 22ND.

Location: Mimi's Café at the Perimeter Place.

Address: 1221 ASHFORD CROSSING. ATLANTA, GA 30346. (770) 351-8444



[Directions](#)



The regular monthly meeting of the Club will be held on the Fourth **Tuesday** of each month at 6:30 p.m. As always, all club members are invited.

We hope to see you there!



MEMBERSHIP

Membership Dues Reminder

Our membership dues for 2016 are due on 11/1/15.

Please completely fill out this form and return it with your check so that we can keep our records up to date.

\$20.00 individual ~ \$25.00 family ~ \$15 Associate

NAME: _____

ADDRESS: _____

PHONE: _____

EMAIL: _____

Please make checks out to GALRC and mail to:

Jim Griffin

130 Hickory Pointe Dr.

Athens, Ga. 30605

**Remember to support our club by
renewing your membership!**

Member's breeder directory

To be included in the breeder's directory of the club's website, please e-mail the following information to our Website master: [Jean McLain](#)

Kennel name, Contact person, Website URL address, e-mail address, phone number and a brief description of your practices. You may include any updated information about current litters.

The club welcomes two new Members:

Carol Murningham and Samantha Fowler.



ANNOUNCEMENTS

20% discount on all website design/redesign – marketing/internet marketing to GALRC members/friends. Personal or Business

It's more important than ever for Google search results that websites are responsive (resize for smartphones and tablets) as over 50% of searches are now done on mobile devices. Very reasonably priced.

Please email me, Jean McLain, jean@Business-Solutions-Center.com and let me know how I can help.

Thanks,

Jean

jean@emailjrm.com

These are the new board members elected at the January meeting:

Officers:

President: Barry Staples

Vice President: Neil Martin.

Corresponding Secretary: Jim Griffin

Recording Secretary: Laura van Dalen

Treasurer: Jodi Martin

Board Members:

Carol Quaif

Lisa Bailey

Julia Kuni

Linda Rehkopf

Interested in having fun and working with your dogs in the field ? There are plans to start practice training sessions for WC. Contact [Lisa Bailey](#) for more info.



JANUARY MEETING MINUTES

The Greater Atlanta Labrador Retriever Club Board meeting was held on January 28, 2016 at Mimi's Café .

The member's meeting was called to order by president, Barry Staples at 6:40 PM.

Members present:

Barry Staples, Jodi Martin, Neil Martin, Lisa Bailey, Jim Griffin, and Laura van Dalen

Treasurer's Report:

Current balance \$7,656.16.

Election of officers and Board:

The Nomination committee presented the sleet as follows:

Officers:

President: Barry Staples

Vice President: Neil Martin.

Corresponding Secretary: Jim Griffin

Recording Secretary: Laura van Dalen

Treasurer: Jodi Martin

Board Members:

Carol Quaif

Lisa Bailey

Julia Kuni

Linda Rehkopf

There was no nominees from the floor.

The above list of officers and member was elected as the board members for the following year.

Election of New Members:

1st reading:

Tanya Swoape and Debbie Winn.



JANUARY MEETING MINUTES

2nd Reading:

Carol Murningham and Samantha Fowler.

Committees reports:

The judges' selection committee for the 2016 show formed by Carol Quaif, Jodi Martin, and Barry Staples are working on the selection of the judges for the 2016 show.

Old Business:

There was no other old business.

New Business:

A motion was made by Jodi Martin and seconded by Laura van Dalen to move the calendar year from November 1st –October 31st to January 1st—December 31st. This will be voted in our next meeting.

A motion was made by Neil Martin and Seconded by Lisa Bailey to make the board officials and member term last 2 years instead of 1 year. This will be voted in our next meeting.

There was a proposal made by Lisa Bailey to start WC and field work training sessions.

A Motion was made by Laura van Dalen to move the meetings from the 4th Thursday of every month to the 4th Tuesday of every months to avoid conflict with shows that start on Thursday. The motion Carried.

A proposal was made by Jodi Martin to set a full year calendar in the club's website with all the meetings and events for the year.

The meeting was adjourned at 8:30 PM

Respectfully submitted,

Laura van Dalen, recording secretary



Hereditary nasal parakeratosis



Hereditary nasal parakeratosis (HNPK) is an inherited autosomal recessive skin disorder observed in Labrador Retrievers. A mutation T>G in the SUV39H2 gene causes the skin of the nose to dry out leading to chronic irritation and inflammation. Symptoms of the disorder generally appear around 6 to 12 months of age as crusty scales on the nose pad.

Affected dogs will eventually develop dry, rough; gray to brown crusts on the surface and edge of the nose. In some cases, painful fissures around and on the tip of the nose develop and if not treated, it can develop superficial bacterial infections. Over time, the nose often begins to depigment changing

skin color from dark to light in color. Although the disorder is nonlife threatening, continuous application of moisturizing agents and antibiotics to reduce the recurrence of excessive nasal crusting is required to alleviate symptoms throughout the life of the dog.

Because HNPK is a recessive disorder, a dog must have two copies of the mutation in order for the disease to manifest. This means that a dog can have one copy of the mutation and not experience any signs or symptoms of HNPK; this dog would be known as a carrier. The carrier can then pass on either the normal gene or the mutated gene to any offspring. If two carriers are bred, there is a 25% chance of having a dog that receives two mutated copies of the gene and would be affected by HNPK.

The histological observations of HNPK affected Labrador Retrievers indicate that the mutation

causes a delay in the differentiation of the specialized cells of the nasal epidermis. To date HNPK

has been exclusively described in the Labrador Retriever. No other obvious effects on dog's health have been reported as being associated with the mutation.

The relatively new test is offered by several known Labs like Optigen, DDC, and VetGen among others.





BRAGS

CH Van Dalen Glitter On The Clouds

(GCH CH Caer Bren McLeod JH & van Dalen Sierra's Diamond Dust)



Glitter Finished her Championship at the EUKANUBA week in FL on December 9th with a 4 pt major.

Handled by Janice Granda and Aaron Wilkerson.

She is currently working on her Grand handled by Amy Wall acquiring her 3 majors in January with 2 BOB and a select under Elizabeth Wenner (Surry Labradors).

Bred and Owned by Laura van Dalen.



BRAGS



Van Dalen Willowbay Kahlua

Went Best in Sweeps at the LRC, inc. specialty on December 11th under judge Deborah Berry.

She also went WB and BW at the Clemson Kennel Club on December 10th under Judge Dana P. Cline for her first 2 points. Handled by Co-owner Amy Wall.

Ice Crush Bella Mare

Went Opposite Sex to the Best in Sweeps at the LRC, inc specialty on December 11th under judge Deborah Berry. Handled by Amy Wall.





LITTER ANNOUNCEMENTS



GCH DICKENDALL BUCKSTONE THREE DOG NIGHT

~ Hips: A ~ Elbows: 0/0 ~
~ Heart: Echo: Normal ~ CERF: Normal ~
~ PRA-PRCD DNA clear ~ EIC DNA clear ~ CNM DNA Clear ~

GCH VAN DALEN ALL EYES ON US

~ Hips: Fair ~ Elbows: Normal ~ Patella: Normal ~
~ Heart: Normal ~ Eyes: Normal ~
~ PRA Clear by Parentage ~ EIC: DNA Clear ~ DD ~

6 Girls and 3 boys born December 25th 2015

	GCH Saddlehill Late Knight Scramble	CH Shalane Fly By Knight
GCH Dickendall Buckstone Three Dog Night	CH Dickendall Princess Phoebe	CH Saddlehill Don't Be Late
	GCH Hyspire Shahli Hotter Than Blaze	CH Dickendall Davaron Gable
GCH van Dalen All Eyes On Us	van Dalen Sierra's Diamond dust	Saddlebrook's Lauralei
		BISS GCH Sure Shot Hyspire Impressive
		CH Hyspire Pipin' Hot
		BISS CH Lubberline Martingale
		van Dalen Storm N Diamonds affair CGC RN



NEWSLETTER DISCLAIMER

The information contained in this Newsletter is for information purposes only and does not constitute a solicitation or an offer to sell products or services.

Although GALRC believes the information on this newsletter to be correct and attempt to keep the information current, GALRC does not warrant the accuracy or completeness of any information. The information is not advice, and should not be treated as such.

GALRC makes no representations whatsoever about the products or prices asked in the Lab Yard Sale section. The representations are exclusively those of the seller and have not been investigated by us for accuracy. The ads are for the convenience of our members. All transactions are solely between buyer and seller.

