



Lab Ledger

The Official Newsletter for the
GREATER ATLANTA LABRADOR
RETRIEVER CLUB



GALRC *CLUB OFFICERS*

PRESIDENT

Neil Martin

VICE PRESIDENT

Lisa Bailey



CORRESPONDING SECRETARY

Jim Griffin

RECORDING SECRETARY

Dale Staples

TREASURER

Jodi Martin

DIRECTORS

Anne Key

Linda Rehkopf

Barry Staples

Carol Quaif

MEMBERSHIP

Jim Griffin

NEWSLETTER EDITOR

Teresa Gordy-Brown

WEBMASTER

Jean McLain

Club Meetings

MONTHLY CLUB MEETING

*Regular meetings are held on the fourth **Thursday** of each month at 6:30 pm. As always, all club members are invited. The date might change due to conflict with near by shows or Holidays.

We hope to see you there!





Announcements

Newsletters will be emailed monthly and will include; if available, the following:

**Monthly Club Meeting info and Club Minutes*

**List of Club Officers*

**Any Announcements (Important messages from the President, Club News and so forth)*

**Articles of Interest pertaining to Labradors, Canine genetics, health and breeding.*

**Available & Services (Members available litters, pups, adults, Stud service, training, handling, boarding, transport or anything dog related)*

**ISO In search of: Members or their clients in search of a specific age, gender, service or referral.*

**Brags (Members brags on titles, accomplishments & more)*

**Membership Form*

**Newsletter Disclaimer*



If you have anything that you'd like to have published in the newsletter, send to ashlandlabradors@gmail.com and please include "GALRC Newsletter" in the subject line.

Thank You!

Teresa Gordy-Brown



Articles

Stud Dog Management



We all hear, see any & everything regarding pregnancy, whelping, puppy raising but you never hear a whole lot about managing stud dogs. Most people take for granted the role a stud plays in production of our litters.

Important things to consider in being a good stud dog manager are:

- *How to properly manage Stud Dogs (Proper Nutrition and Care).
- *Learn to collect efficiently without the need of a teaser bitch.
- *Learn to evaluate semen.
- *Learn to properly extend, package & ship semen.
- *Keep stud dogs fertile.
- *Record Keeping.



First, let's talk about managing studs. The most important thing to increase over-all health and vitality with any stud dogs is to have access to fresh air, sunshine and plenty of exercise. It is a no-brainer that happy dogs will always produce better. Throw in any stressors and watch the "out-put" decline rapidly.

Stud Dog Management Continued..

Temperament plays a role in healthy semen production as well. Some are easily put off by the presence of strangers, someone talking or a “bitchy” bitch. Others (for lack of better words) are rapist! They waste no time in getting down to business not matter where you are, who you are with or how sassy the bitch is...they will force themselves on a bitch and could care less if they hit the target or not! Some will take a “Outside Thigh” as opposed to an “inside tie”. Yes, you read that right.. Thigh! LOL! Knowing how to deal with various temperaments gives you an advantage in stud dog management.

Collecting without a Teaser Bitch (In season female)

Teaching a young stud to collect without a female present can sometimes be very confusing to them. With-out the aid of a female in heat present, most boys pack it up. Even the most experienced studs won't attempt to breed a bitch that has not ovulated. Sometimes you have a stud dog that can never tie naturally. There are a lot of scenario's that call for collecting.

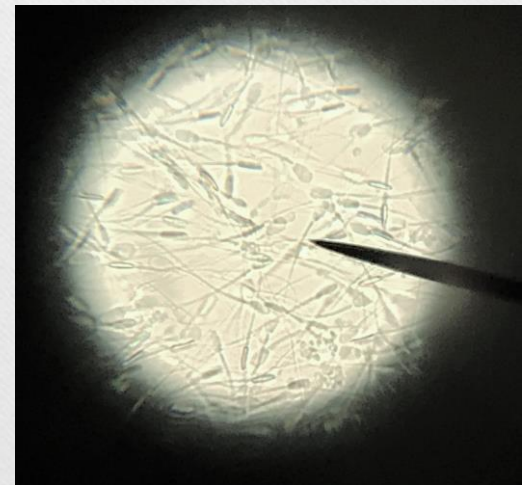
So, how do we solve this problem of not always having a teaser present? Start collecting samples from your in-season bitches. I use medical swabs or cotton rounds to wipe the bitches vulva during heat cycles. I place the swabs in plastic freezer bags. Swab especially closer to the time of Ovulation. When I need to collect, I just take two swabs out of the freezer. Grab one of our “non cycling” girls. Take the two swabs, place them next to the bitches vulva and squirt two sprays from a water bottle and rub the swabs against her fur. This helps to transfer the pheromones from the swabs to the bitches fur (close proximity to

Stud Dog Management continued..

the area he will be smelling). By doing this, we fool “most of them” into thinking that the bitch is in season and ready! We train all our Ladies to “stand” on command. So most of the time, they will stand quietly while the male mounts and we are able to collect from him effortlessly and quickly! Our girls are always happy to assist because they know they get rewarded (cookies) for their participation. You can also learn to collect a male without the use of pheromones and other girls. In our experience, we find this practice works great on getting new boys started in the right direction. Don’t be hesitant about learning to collect your boys! Nothing worse than missing a breeding due to not knowing how to collect!

Next month I will discuss semen evaluation, extending, packaging and shipping.

Please feel free to join the [Labrador Retriever Stud Dog Discussion](#) Group on Facebook.







FRESH FROM THE BARKERY

Yields: 15-18 cupcakes or two 4-inch round cakes.

Ingredients

- 2 cups quick oats
- 1/2 cup smooth natural peanut butter
- 1/4 cup coconut oil (try CocoTherapy's, cocotherapy.com) or olive oil
- 1 mashed banana (preferably overly ripe)
- 1/2 cup unsweetened applesauce
- 1 egg
- 2 tsp baking soda
- 1 tsp baking powder
- 1 Tbsp honey

Frosting:

- 2 cups smooth natural peanut butter
- 1-2 tbs water

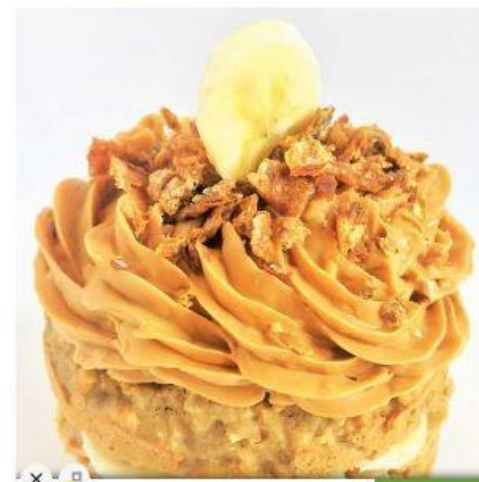
Directions

1. Preheat oven to 350°.
2. Line your muffin tins with cupcake liners or oil. If making cakes, line the cake pans with parchment paper.
3. Mash banana and add peanut butter, oil, applesauce, honey, and egg. Mix until smooth.
4. In another bowl, combine oats, baking soda, and baking powder.
5. Gradually add the combined wet ingredients to the dry, stirring until well combined.
6. Spoon into cupcake cups or pan until 2/3 full.
7. Bake cupcakes for 18 minutes, and cakes for 28 minutes.
8. While cupcakes bake, make frosting: using electric mixer, whip peanut butter until soft; slowly add water until you have a frosting-like consistency.
9. Once cakes cool, spread or pipe on frosting.
10. You can also decorate the top with crushed dried salmon skins, sliced banana or your pup's favourite treats.

These pup-cakes can last up to a week in an airtight container, or you can freeze them and keep them longer.



DIY Eat: Peanut Butter & Banana Pup-Cakes! This easy recipe is sure to put a smile on your dog's face!



DELICIOUS STUFFED CHICKEN BREASTS

[FIND NOW ▶](#)



Litter Announcements



Please email Teresa at ashlandlabradors@gmail.com to include your litter announcements.

**LACHLAN LABRADORS is expecting an all yellow litter due March 24th, 2018.*

CAN CH. Eagertrieve Paevalley Endeavor x Sapelo's Lachlan Magnificent
Contact Tom O'Hern (678) 234-8841 or email to oherntc@bellsouth.net Website:
www.lachlanlabs.com





Available Services



Website Design/Redesign & Marketing for GALRC Members/Friends. Personal or Business

It's more important than ever for Google search results that websites are responsive (resize for smartphones & tablets) as over 50% of searches are now done on mobile devices. Very reasonably priced.

Please email me, Jean McLain, jean@market-now.com and let me know how I can help.
Thanks,

Jean

jean@market-now.com

<https://www.Market-Now.com>

BREEDERS DIRECTORY

To be included in the breeders directory on the GALRC.com website, please email the following information to our webmaster: Jean McLain (Jean@market-now.com)

Your Kennel Name, Contact person, Website URL, email address and a brief description of your practices. You may include any updated information about current litters.



ISO



No post this issue.

Send in your “ISO” post to Teresa at ashlandlabradors@gmail.com and they will go out in the very next newsletter.

Available Dogs



Please email Teresa at ashlandlabradores@gmail.com to include your information on available announcements.

- Jerry Wagner sent this message to our Club February 18th. I am not sure if he has found his dog a home yet but in case you might know of anyone interested...
8 month old female Chocolate Labrador needs to be rehomed. Couple is in their 70's and do not have the energy/stamina to deal with the dog. Spayed. All shots UTD. Please email Jerry at jerry30060@gmail.com



Yard Sale



Please email Teresa at ashlandlabradors@gmail.com to include your items for sale

****Example Format Below *Excalibur Kennels:***

Mason Kennels 10x5x6 Qnty: 6 Good Condition. \$1200.00 Will deliver within 100 miles.

Contact Jo @ 408-555-5555 or email to exclai Burkennels@aol.com

MEMBERSHIP



Membership Dues Reminder

Our membership dues for 2018 are due on 11/1/17.

Please completely fill out this form and return it with your check so that we can keep our records up to date.

\$20.00 individual ~ \$25.00 family ~ \$15 Associate

NAME: _____

ADDRESS: _____

PHONE: _____

EMAIL: _____

Please make checks out to GALRC and mail to:

Jim Griffin

130 Hickory Pointe Dr.

Athens, Ga. 30605

**Remember to support our club by
renewing your membership!**

Member's breeder directory

Newsletter Disclaimer

The information contained in this Newsletter is for Information purposes only and does not constitute a solicitation or an offer to sell products or services.

Although GALRC believes the information in this newsletter to be correct and attempt to keep the information current, GALRC does not warrant the accuracy of completeness of any information contain herein.

GALRC does not personally endorse or recommend any products or services offered, mentioned or advertised in this newsletter.

The information contained in this newsletter is not advice and should not be treated as such.

GALRC makes no representations whatsoever about the products or prices in the “Available & Services sections” The representations are exclusively those of the seller and have not been investigated by us for accuracy.

The ads are for the convenience of our members. All transactions are solely between buyer and seller.