

#2022517101

#2022517102

## JUDGING SCHEDULE

BACK TO BACK SPECIALTIES

26th Annual Specialty Shows, Sweepstakes, Veteran Sweepstakes  
Junior Showmanship

**For Labrador Retrievers Only**

~ Unbenched ~ All Classes Outdoors on Grass ~

# GREATER ATLANTA LABRADOR RETRIEVER CLUB, INC.

Licensed by the American Kennel Club



**SATURDAY, NOVEMBER 19, 2022  
& SUNDAY, NOVEMBER 20, 2022**

**Bouckaert Farm  
(Chattahoochee Hills Eventing)  
10045 Cedar Grove Road  
Fairburn, Georgia 30213**

**SHOW HOURS ~ 7:00 am to 7:30 pm each day**

**SHOW HOURS:** The Show Grounds are PRIVATE PROPERTY and therefore are not open to exhibitors on Friday, November 18<sup>th</sup>, Unless entering & exhibiting in the B match or parking a RV/Motorhome. No Exceptions. Grounds will be open from 7:00 am to 7:30 pm Saturday, November 19<sup>th</sup>, 2022 & Sunday, November 20, 2022. Grounds will not be open to exhibitors on Monday, November 21<sup>st</sup>.

**SPECIAL THANKS  
TO PURINA FOR  
SPONSORING THIS  
YEAR'S SPECIALTY!**



## **Event Committee**

### **Show Secretary**

Karen Arlin c/o Susan Gordon  
[www.gordonshowsec.info](http://www.gordonshowsec.info)  
4 Seminole Path, Wildwood, FL 34785  
Fax: 877-667-4304 / 352-661-3429

### **Show Chairperson**

Cheryl Little  
[Whisperwoodlabs@cox.net](mailto:Whisperwoodlabs@cox.net)  
**Assistant Show Chairperson**  
Debbie Winn

### **Official Show Photographer**

Jen Gran – Jen Gran Photography  
[www.jengran.shootproof.com](http://www.jengran.shootproof.com), 770-722-5612  
[jengran@yahoo.com](mailto:jengran@yahoo.com)

If you are interested in candid or portrait photography  
during show hours contact Jen.

*Only the official photographer may take win pictures on show grounds.*

**All rights to TELEVISION, VIDEOTAPE, ADVERTISE, PHOTOGRAPH, PROMOTE** or otherwise exploit these events are vested in The Greater Atlanta Labrador Retriever Club, Inc. or in persons to whom assignments of such rights have been made in writing by the club. All persons and animals on the event grounds at any time while the events are in progress, do so by attending these events or participating therein, grant to the club the right to photograph, televise, videotape, audiotape or otherwise use their likeness and voice in any manner without further release or consent.

**VETERINARIAN** The Pathway To Health Wellness & Urgent Care, Stephanie Pullen, DVM,  
**ON CALL** 2862 Hwy 54W, Peachtree City, GA 30259, (404) 450-4014  
**EMERGENCY** Westside Animal Emergency Clinic, 875 Thornton Rd, Lithia Springs, GA  
**ANIMAL CLINICS** 30122, (770) 604-1467, M-F 6pm—8am, Weekend Sat 12pm—8am Mon.  
Blue Pearl Atlanta Westside-Midtown, 1071 Howell Mill Rd NW, Atlanta,  
GA (404) 649-6333, Open 24 hours, 24/7. Fully equipped; 45 minutes  
from show site.

**Exhibitors should follow their veterinarians' recommendation to assure their  
dogs are free of internal and external parasites, any communicable disease and  
have appropriate vaccinations.**

## **CONFORMATION JUDGES**

### **B MATCH- FRIDAY, NOV. 18, 2022**

Mrs. Nancy Poplin (Popway)  
Locust, NC

### **SATURDAY, NOVEMBER 19, 2022**

ALL REGULAR DOG CLASSES & INTERSEX

Mr. Gary Johnson (Cremino)  
Surry, England

ALL REGULAR BITCH & NON-REGULAR CLASSES

Mrs. Margaret Brown (Ramsayville)  
Falkirk, Scotland

JUNIOR SHOWMANSHIP CLASSES

Ms. Sandy Weaver  
Marietta, GA

ALL SWEEPSTAKES

Mrs. Angela Rogalla (Brae)  
Blaine, WA

### **SUNDAY, NOVEMBER 20, 2022**

ALL REGULAR DOG CLASSES & INTERSEX

Mrs. Margaret Brown (Ramsayville)  
Falkirk, Scotland

ALL REGULAR BITCH & NON-REGULAR CLASSES

Mr. Gary Johnson (Cremino)  
Surry, England

JUNIOR SHOWMANSHIP CLASSES

Ms. Joyce Quick  
Palmetto, GA

ALL SWEEPSTAKES

Mr. Tom Flaherty (Hedgelawn)  
Bangor, PA

### Judging Schedule

**Saturday, November 19, 2022 / 2022517101**

*There is a Total of 240 Individual Dogs Entered in This Event for 339 Entries*

**240 63 / 137 / 19 / 13 Veterans 3 / 4**

**Ring 3 Judge: Ms. Sandy Weaver**

**Total: 4**

**8:45AM 4 Junior Showmanship**

2 Novice 2 Open

**Ring 3 Judge: Mrs. Angela Rogalla**

**Total: 92**

**To Follow 85 Puppy Sweepstakes - 32 / 53**

5	Puppy Dogs 6-9 mos, Black	8	Puppy Bitches 6-9 mos, Black
1	Puppy Dog 6-9 mos, Chocolate	1	Puppy Bitches 6-9 mos, Chocolate
2	Puppy Dogs 6-9 mos, Yellow	5	Puppy Bitches 6-9 mos, Yellow
4	Puppy Dogs 9-12 mos, Black	6	Puppy Bitches 9-12 mos, Black
6	Puppy Dogs 9-12 mos, Yellow	1	Puppy Bitch 9-12 mos, Chocolate
5	12-15 mos Dogs, Black	3	Puppy Bitches 9-12 mos, Yellow
3	12-15 mos Dogs, Yellow	8	12 - 15 mos, Bitches Black
5	15-18 mos Dogs, Black	3	12 - 15 mos, Bitches Chocolate
1	15-18 mos Dogs, Yellow	8	12 - 15 mos, Bitches Yellow
		7	15 - 18 mos, Bitches Black
		2	15 - 18 mos, Bitches Chocolate
		1	15 - 18 mos, Bitches Yellow

#### **Best in Sweepstakes / Best of Opposite Sex to Best in Sweepstakes**

**To Follow 7 Veteran Sweepstakes - 3 / 4**

3 Veteran Dogs, 7+ Yrs 4 Veteran Bitches, 7+ Yrs

#### **Best in Sweepstakes / Best of Opposite Sex to Best in Sweepstakes**

**Ring 1 Judge: Mr. Gary Johnson**

**Total: 95**

**10:00 AM 63 Labrador Retriever Dogs**

6	Open Dogs Black	10	12-18 mos Dogs, Black
4	Open Dogs Chocolate	2	12-18 mos Dogs, Yellow
4	Open Dogs Yellow	4	Puppy Dogs 9-12 mos, Black
6	American Bred Dogs, Black	5	Puppy Dogs 9-12 mos, Yellow
3	American Bred Dogs, Yellow	4	Puppy Dogs 6-9 mos, Black
6	Bred by Exhibitor Dogs, Black	2	Puppy Dog 6-9 mos, Chocolate
1	Bred by Exhibitor Dog, Chocolate	2	Puppy Dogs 6-9 mos, Yellow
3	Bred by Exhibitor Dogs, Yellow		<b>Winners Dog</b>
1	Amateur Owner Handler Dog, Black		

#### **Lunch**

**Best of Breed to Follow Brace**

**32 Best of Breed 19 / 13**

**Best Puppy / Bred by Exhibitor / Veterans to Follow Best of Breed**

**Ring 2 Judge: Mrs. Margaret Brown**

**Total: 149**

**8:00 AM 137 Labrador Retriever Bitches,**

**Vet 2 / 4, Hunting Retriever 1 / 0, Stud 2, Brood 2, Brace 1**

16	Bred by Exhibitor Bitches Black	9	Puppy Bitches 6-9 mos, Black
1	Bred by Exhibitor Bitch Chocolate	1	Puppy Bitches 6-9 mos, Chocolate
2	Bred by Exhibitor Bitches Yellow	5	Puppy Bitches 6-9 mos, Yellow

<b>Ring 2 Cont.</b>		2	American Bred Bitches Chocolate
7	Puppy Bitches 9-12 mos, Black	5	American Bred Bitches Yellow
1	Puppy Bitch 9-12 mos, Chocolate	15	Open Bitches Black
3	Puppy Bitches 9-12 mos, Yellow	9	Open Bitches Chocolate
15	12 - 18 mos, Bitches Black	9	Open Bitches Yellow
5	12 - 18 mos, Bitches Chocolate		<b>Winners Bitch</b>
9	12 - 18 mos, Bitches Yellow	2	Veteran Dogs 7 Years & Over
5	Am/Own/Hand Bitches Black	1	Hunting Retriever Dog
2	Am/Own/Hand Bitches Chocolate	4	Veteran Bitches 7 Years & Over
1	Am/Own/Hand Bitches Yellow	2	Stud Dog
15	American Bred Bitches Black	2	Brood Bitch

### 45 min Lunch Break at Club Discretion

**Sunday, November 20, 2022 / 2022517102**

*There is a Total of 241 Individual Dogs Entered in This Event for 327 Entries*

**241 63 / 139 / 18 / 13 Veteran 3 / 4**

<b>Ring 3</b>	<b>Judge: Ms. Joyce Quick</b>	<b>Total: 4</b>
<b>8:45AM</b>	<b>4 Junior Showmanship</b>	
2	Novice	2 Open
<b>Ring 3</b>	<b>Judge: Mr Thomas Flaherty</b>	<b>Total: 80</b>
<b>To Follow</b>	<b>73 Puppy Sweepstakes - 28 / 45</b>	

4	Puppy Dogs 6-9 mos, Black	8	Puppy Bitches 6-9 mos, Black
1	Puppy Dog 6-9 mos, Chocolate	1	Puppy Bitches 6-9 mos, Chocolate
3	Puppy Dogs 6-9 mos, Yellow	6	Puppy Bitches 6-9 mos, Yellow
3	Puppy Dogs 9-12 mos, Black	6	Puppy Bitches 9-12 mos, Black
5	Puppy Dogs 9-12 mos, Yellow	1	Puppy Bitch 9-12 mos, Chocolate
3	12-15 mos Dogs, Black	2	Puppy Bitches 9-12 mos, Yellow
2	12-15 mos Dogs, Yellow	6	12 - 15 mos, Bitches Black
6	15-18 mos Dogs, Black	1	12 - 15 mos, Bitches Chocolate
1	15-18 mos Dogs, Yellow	7	12 - 15 mos, Bitches Yellow
		4	15 - 18 mos, Bitches Black
		2	15 - 18 mos, Bitches Chocolate
		1	15 - 18 mos, Bitches Yellow

**Best in Sweepstakes / Best of Opposite Sex to Best in Sweepstakes**

<b>To Follow</b>	<b>3 Veteran Sweepstakes - 3 / 4</b>	
3	Veteran Dogs, 7+ Yrs	4 Veteran Bitches, 7+ Yrs

**Best in Sweepstakes / Best of Opposite Sex to Best in Sweepstakes**

<b>Ring 1</b>	<b>Judge: Mrs. Margaret Brown</b>	<b>Total: 94</b>
<b>10:00 AM</b>	<b>63 Labrador Retriever Dogs</b>	
6	Open Dogs Black	10 12-18 mos Dogs, Black
3	Open Dogs Chocolate	3 12-18 mos Dogs, Yellow
4	Open Dogs Yellow	3 Puppy Dogs 9-12 mos, Black
6	American Bred Dogs, Black	4 Puppy Dogs 9-12 mos, Yellow
3	American Bred Dogs, Yellow	4 Puppy Dogs 6-9 mos, Black
6	Bred by Exhibitor Dogs, Black	2 Puppy Dog 6-9 mos, Chocolate
1	Bred by Exhibitor Dog, Chocolate	3 Puppy Dogs 6-9 mos, Yellow
3	Bred by Exhibitor Dogs, Yellow	<b>Winners Dog</b>
1	Amateur Owner Handler Dog, Black	<b>LUNCH</b>

**Best of Breed to Follow Brood 31 Best of Breed 18 / 13 Best Pup/BBE/Vet to follow**

**Ring 2 Judge: Mr. Gary Johnson**  
**8:00 AM 139 Labrador Retriever Bitches,**  
**Vet 2 / 4, Hunting Retriever 1 / 0, Stud 1. Brood 2**

**Total: 149**

17	Bred by Exhibitor Bitches Black	1	Am/Own/Hand Bitches Yellow
1	Bred by Exhibitor Bitch Chocolate	14	American Bred Bitches Black
2	Bred by Exhibitor Bitches Yellow	2	American Bred Bitches Chocolate
9	Puppy Bitches 6-9 mos, Black	5	American Bred Bitches Yellow
1	Puppy Bitches 6-9 mos, Chocolate	16	Open Bitches Black
6	Puppy Bitches 6-9 mos, Yellow	7	Open Bitches Chocolate
9	Puppy Bitches 9-12 mos, Black	9	Open Bitches Yellow
1	Puppy Bitch 9-12 mos, Chocolate		<b>Winners Bitch</b>
6	Puppy Bitches 9-12 mos, Yellow	2	Veteran Dogs 7 Years & Over
15	12 - 18 mos, Bitches Black	1	Hunting Retriever Dog
5	12 - 18 mos, Bitches Chocolate	4	Veteran Bitches 7 Years & Over
9	12 - 18 mos, Bitches Yellow	1	Stud Dog
5	Am/Own/Hand Bitches Black	2	Brood Bitches
2	Am/Own/Hand Bitches Chocolate		

**45 min Lunch Break at Club Discretion**

### **DIRECTIONS TO THE SHOW SITE:**

**From I-285 North:** Travel southwest on I-285 to Exit 7, Cascade Rd.

**From I-285 South:** Travel northwest on I-285 to Exit 7, Cascade Rd.

Go **west** on Cascade Rd. Turn **left** on Fulton Industrial Parkway, Rt. 70 which becomes Cascade-Palmetto Pkwy. **Right** on Cochran Mill Rd. Take a **Right** on Cedar Grove Rd. Follow to 10045 Cedar Grove Rd., turn **Right into grounds**.

Look for club dog show signs to direct you.

### **Directions from Host Hotel to Show Site (15.4 mi):**

Depart Host Hotel – **Hilton Garden Inn Atlanta West/Lithia Springs, 110 Interstate W Pkwy, Lithia Springs, GA 30122**

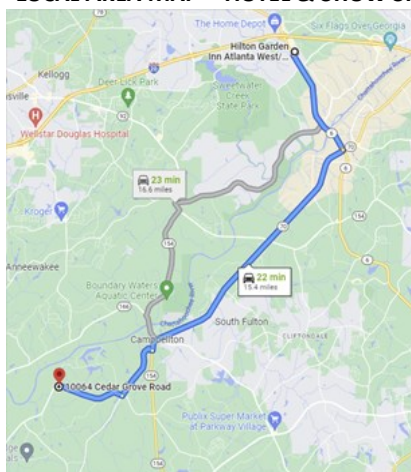
Take Interstate W Pkwy to GA-6 E/Thornton Rd –**Left** Turn (3.2 mi)

Take GA-70 S to Cochran Mill Rd in South Fulton – **Right** Turn (8.3 mi)

Take Cochran Mill Rd in South Fulton Drive to Cedar Grove – **Right** Turn (3.7 mi)

**Proceed to 10064 Cedar Grove Rd, Fairburn. GA 30213 –Right Turn (1.8 mi)**

### **LOCAL AREA MAP – HOTEL & SHOW SITE**



**HOST HOTEL:**  
Hilton Garden Inn  
110 Interstate West Pkwy,  
Lithia Springs, GA 30122



**SHOW SITE:**  
BOUCKAERT Farm  
10045 Cedar Grove Rd  
Fairburn, GA 30213

### RV/MOTOR HOME PARKING

Exhibitors who wish to park a motor home or recreational vehicle at the SHOW SITE (Bouckaert Farm) must make advance reservations and payment no later than November 4<sup>th</sup>, 2022. There is available space for approximately 20 Rv's. RVs will be in **DESIGNATED AREAS ONLY** which are available on a first come, first serve basis. Upon arrival please wait for grounds personnel for parking instructions.

**To request a RV Reservation**, please contact Tom O'Hern at oherntc@bellsouth.net or text him at (678) 234-8841. NOTE: There are no hook ups for water or electric. *Shower facilities are available at the horse competition venue; as well as water for filling containers.* Cost for the weekend is **\$60**. RV's may arrive after 1pm on Friday and must vacate the show grounds by 7:30pm Sunday evening. Checks should be made payable to "GALRC, Inc." and should be sent to Tom O'Hern, 1496 Stratfield Cir NE, Atlanta, GA 30319. **All reservations and payments are required to be made IN ADVANCE – no exceptions, no refunds**



**New  
Location**

**HOST HOTEL**  
**Hilton Garden Inn Atlanta West**  
110 Interstate West Parkway  
Lithia Springs, GA 30122  
Phone: (770) 949-8980



**Pet  
Friendly!!**

30 Rooms (all King & Double Queen Rooms) have been blocked for the event. When making reservations, call the hotel directly; let the front desk know you are coming for the GALRC Specialty Show. **The room rate has been guaranteed through October 28, at \$119/night for King and \$129 for Double** (plus taxes and fees). The hotel WILL accept dogs for a one-time non-refundable fee of \$50 per room per stay. The Show Committee will record the name of any guest whose dog causes damage to a room, is left uncrated in a room preventing the cleaning staff from entering, is left unattended in a room and becomes a nuisance barker or is disruptive in any way. **All dogs MUST BE CRATED in a room.** Plastic will be available to place under crates at the front desk when you check in. This hotel's accommodations are wonderful and we do not want to risk losing them as a host hotel for future specialty show events. **There is a full service Restaurant and Bar in the hotel.**

Hotel Booking Link here <https://www.hilton.com/en/book/reservation/deeplink/?ctyhocn=ATLDLGI&groupCode=GAL&arrivaldate=2022-11-16&departuredate=2022-11-23&cid=OM,WW,HILTONLINK,EN,DirectLink&fromId=HILTONLINKDIRECT>

**EXHIBITORS ARE REMINDED TO KEEP THE SHOW AND HOTEL GROUNDS CLEAN.** Please put all refuse in containers on the show grounds and at the hotel. You are responsible for cleaning up after your own dogs. The club has provided buckets and pooper scoopers. **Dogs are not permitted to run free on the show or hotel grounds. An Event Committee Hearing will result as a violation of hotel rules or any damage to hotel/motel rooms, grounds or premises.**

### PARKING

Parking is on a first come, first serve basis in the areas designated for parking as directed by club officials. Exhibitors with a handicapped placard will be directed to the handicapped parking area with easy access to the rings. Xpens and Pop-up tents are permitted. Main driveway to the show grounds must be kept clear of vehicles at all times under the order of the local fire marshal. Exhibitors that park in the main drive will be asked to move and if they do not comply their vehicles will be towed. RV's must park as directed by the Grounds Chairperson or exhibitors will be asked to leave the show grounds.

## HOSPITALITY

**Coffee, water, pastries and fresh fruit** will be offered compliments of the GALRC Inc., for all exhibitors and guests both mornings by the rings at the show site.



**Lunch** will be available by Rivera's BBQ Taste Of Texas on Saturday & by Tres Jardines (Mexican) on Sunday from 11:00am—2:00pm. Make sure you place your order for lunch; both trucks will have very limited food for those not purchasing lunch tickets.

**Saturday Only, Best of Breed Hospitality:** Friends, exhibitors and guests are welcome to partake in our ringside offerings **prior to the start of Best of Breed**. We will have water, beer, wine, light hors d'oeuvres, crudité and of course dessert compliments of the GALRC. Please join us in fellowship and libations during Best of Breed! After the completion of all judging and while you are still enjoying a beverage please join us for our **50/50 ball toss in the ring**. You might win some money while having lots of fun!!

## . Notice To Exhibitors

**SHOW HOURS:** The Show Grounds are PRIVATE PROPERTY and therefore are not open to exhibitors on Friday, November 18<sup>th</sup>, Unless entering & exhibiting in the B match or parking a RV/Motorhome. No Exceptions. Grounds will be open from 7:00 am to 7:30 pm Saturday, November 19<sup>th</sup>, 2022 & Sunday, November 20, 2022. Grounds will not be open to exhibitors on Monday, November 21<sup>st</sup>.

The Greater Atlanta Labrador Retriever Club, Inc. or their members or agents assume no responsibility for any loss, damage or injury sustained by attendees, exhibitors, handlers or to any of their dogs or property; and further assume no responsibility for any injury to children in attendance.

---

---

## CGC & TK TESTING November 19th and 20th, 2022

**Saturday & Sunday from 9:00 am—1:00pm**

**Evaluator: Deb Brown, Northledgelabs@gmail.com**

This is a walk-in event so work on those skills!

For **CGC** Please bring: regular buckle collar, brush & AKC registration information.

**Trick Dog testing available for Novice & Intermediate ONLY.**

Go to [www.akc.org/sports/trick-dog/resources/trick-dog-applications](http://www.akc.org/sports/trick-dog/resources/trick-dog-applications) for tricks.

**Please Note:** Some very basic props will be provided. Please bring your own props if you require a specialized prop. No tricks with **excessive noise allowed**.

**Please go to the Secretary's Desk for registration forms and payment.**

**Day of: \$20 for each test**

---

---

## GALRC "B" MATCH

FOR LABRADOR RETRIEVERS, SANCTIONED BY THE AMERICAN KENNEL CLUB

**FRIDAY, NOVEMBER 18<sup>TH</sup>, 2022**

~ BOUCKAERT FARM ~ 10045 CEDAR GROVE RD, FAIRBURN, GA 30213~

**SHOW GROUNDS ARE ONLY OPEN ON FRIDAY AT 3:00PM FOR MATCH EXHIBITORS**

**SAME DAY REGISTRATION: 3 PM TO 4 PM.**

**JUDGING WILL BEGIN AT 4:00PM.**

**JUDGE:**

**NANCY POPLIN (POPCAY)**

**REGULAR CLASSES:**

**DIVIDED BY SEX. DOGS WITH CHAMPIONSHIP POINTS MAY COMPETE.**

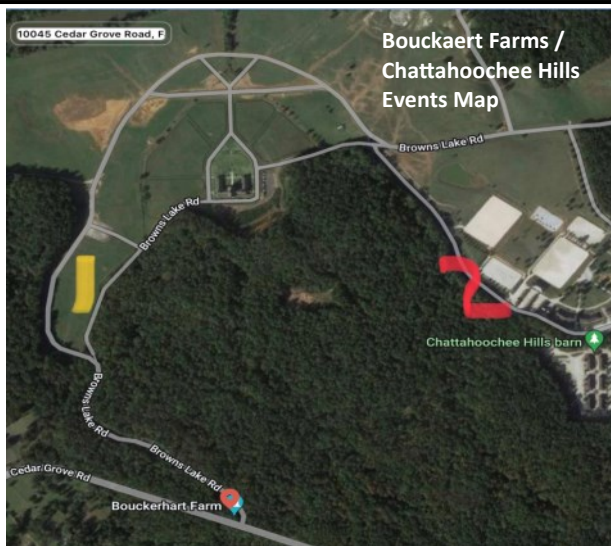
**4-6 MONTH, 6-9 MONTH, 9-12 MONTH, 12-18 MONTH & OPEN.**

**COVID WAIVER:** By attending these events, you voluntarily assume all risks related to exposure to COVID-19, its variants and any communicable disease for yourself, family members and others whom you may expose. You forever release and waive your right to bring suit against The Greater Atlanta Labrador Retriever Club, Inc., GAIA LLC dba Chattahoochee Hills Eventing at Bouckaert Farm, their affiliates, managers, members, agents, officers, directors, employees, volunteers, attorneys, heirs, representatives, successors, vendors, judges, stewards, and officials, in connection with exposure to, infection from and or spread of a communicable disease arising from participation in the GALRC specialty shows held at the Chattahoochee Hills Eventing/Bouckaert Farm facility grounds.

**NOTICE TO EXHIBITORS AND ATTENDEES**  
**Chattahoochee Hills Eventing at Bouckaert Farm**

Chattahoochee Hills Eventing at Bouckaert Farm located at 9445 Browns Lake Road, Fairburn, Georgia is a multipurpose property owned and operated by GAIA, LLC which hosts multiple equestrian activities as well as other activities including, but not limited to cinematography and film production. These activities are conducted throughout the property, which contains lakes, ponds, other natural and manufactured structures and animals that could potentially be a source of injury to you.

**LIABILITY WAIVER:** All persons entering the show site and property for whatever purpose do so entirely at their own risk. By virtue of entering the show, you and/or your agent have accepted the terms listed in this premium list and assume all risks involved for yourself, family members and others whom you have invited to attend and/or participate in these shows. You forever release and waive your right to bring suit against The Greater Atlanta Labrador Retriever Club, Inc., GAIA LLC dba Chattahoochee Hills Eventing at Bouckaert Farm, their affiliates, managers, members, agents, officers, directors, employees, volunteers, attorneys, heirs, representatives, successors, vendors, judges, stewards, and officials, related to participation in the GALRC specialty shows or your presence on the property of Chattahoochee Hills Eventing/Bouckaert Farm.



Bouckaert Farm entrance – 10045 Cedar Grove Rd.

#1 location of show grounds – tents, rings and RV parking for the GALRC specialty.

#2 location is the Eventing Area with riding rings, restrooms, showers & water.

Exhibitors may only go into the two areas that are identified. Please be courteous since there will be a horse event the same weekend as our specialty. Any exhibitor found outside of the two areas will be asked to vacate the property.